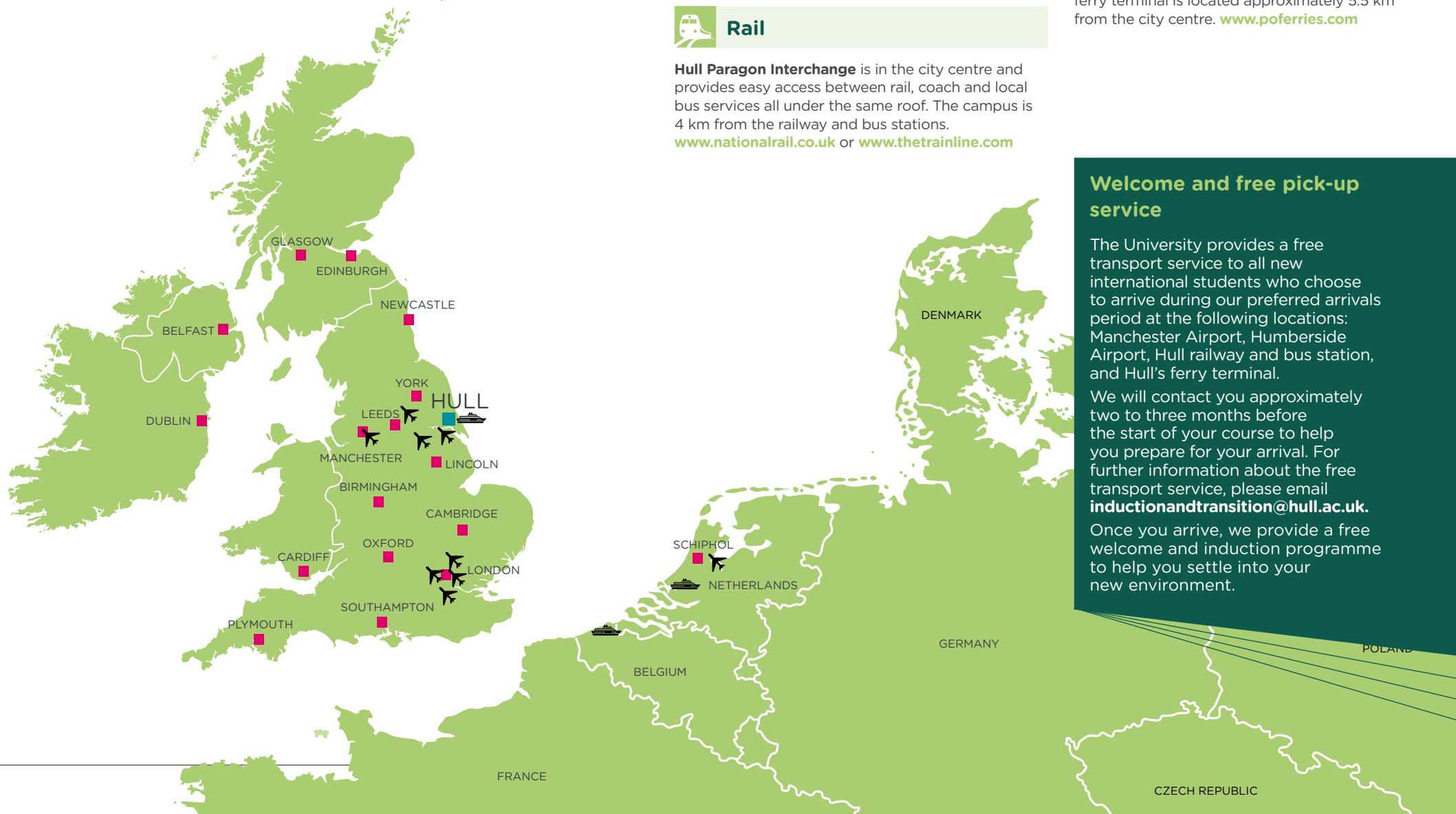


Visiting the University

The University of Hull enjoys good national and international air, rail, road and ferry connections, making it an easy place to reach.



How to get to Hull

Air

Humberside Airport: located about 40 minutes to the campus, there are three daily departures operated by KLM to Amsterdam Schiphol Airport, giving you connections to 800 destinations worldwide. www.humbersideairport.com

Leeds Bradford International Airport: about one hour and 30 minutes by road to the campus. www.leedsbradfordairport.co.uk

Manchester Airport: about two hours by road to the campus. www.manchesterairport.co.uk

Rail

Hull Paragon Interchange is in the city centre and provides easy access between rail, coach and local bus services all under the same roof. The campus is 4 km from the railway and bus stations. www.nationalrail.co.uk or www.thetrainline.com

By coach/bus

Coaches to Hull are available via National Express and link with other national and European services. Coaches to London terminate at Victoria Station. www.nationalexpress.com

Ferry

Hull is connected by air and sea to Europe. P&O Ferries offers daily overnight services to Rotterdam and Zeebrugge from Hull. The ferry terminal is located approximately 5.5 km from the city centre. www.poferries.com

Welcome and free pick-up service

The University provides a free transport service to all new international students who choose to arrive during our preferred arrivals period at the following locations: Manchester Airport, Humberside Airport, Hull railway and bus station, and Hull's ferry terminal.

We will contact you approximately two to three months before the start of your course to help you prepare for your arrival. For further information about the free transport service, please email inductionandtransition@hull.ac.uk.

Once you arrive, we provide a free welcome and induction programme to help you settle into your new environment.